

Fill First Bay Sides and Top with Balsa or Foam

COLOR:

Overall Natural Aluminum
 Dark Blue Striping and some Lettering
 White Number 18 on Rudder

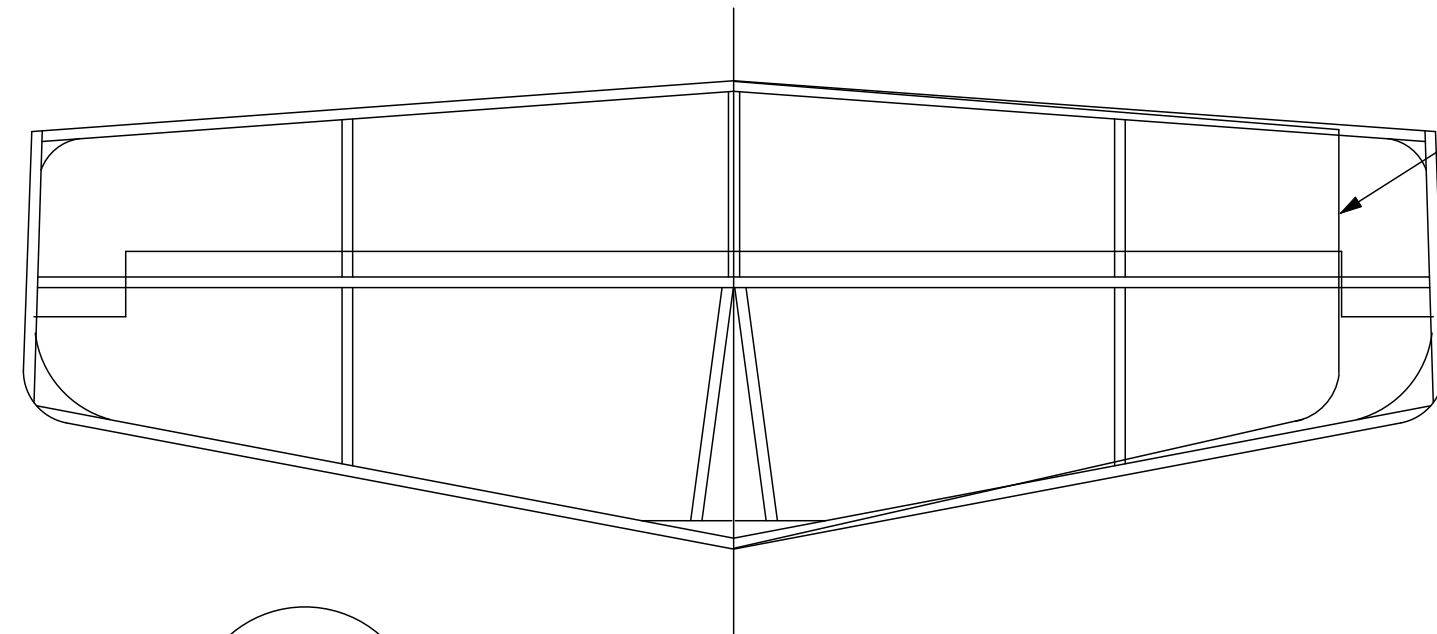
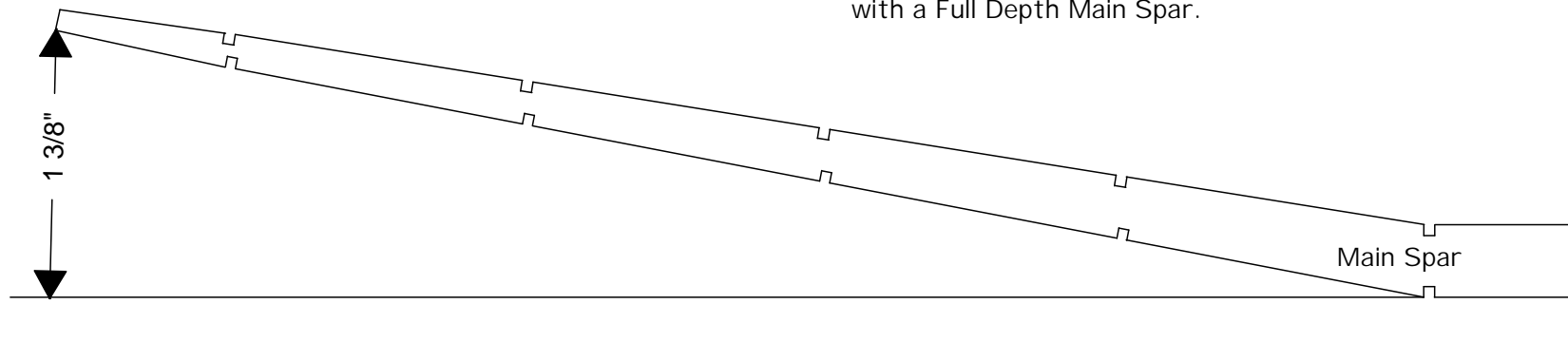
TSUNAMI

Scale References:

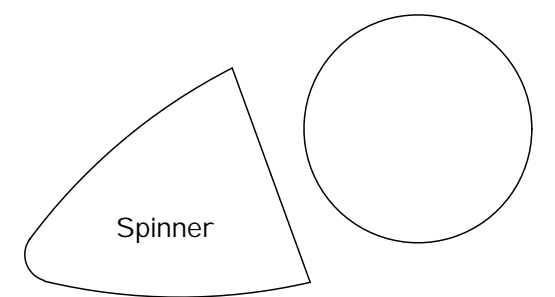
Take Off No. 124 (3-view)
 Sport Aviation Dec 86
 Air Racing Unlimited Vol 1



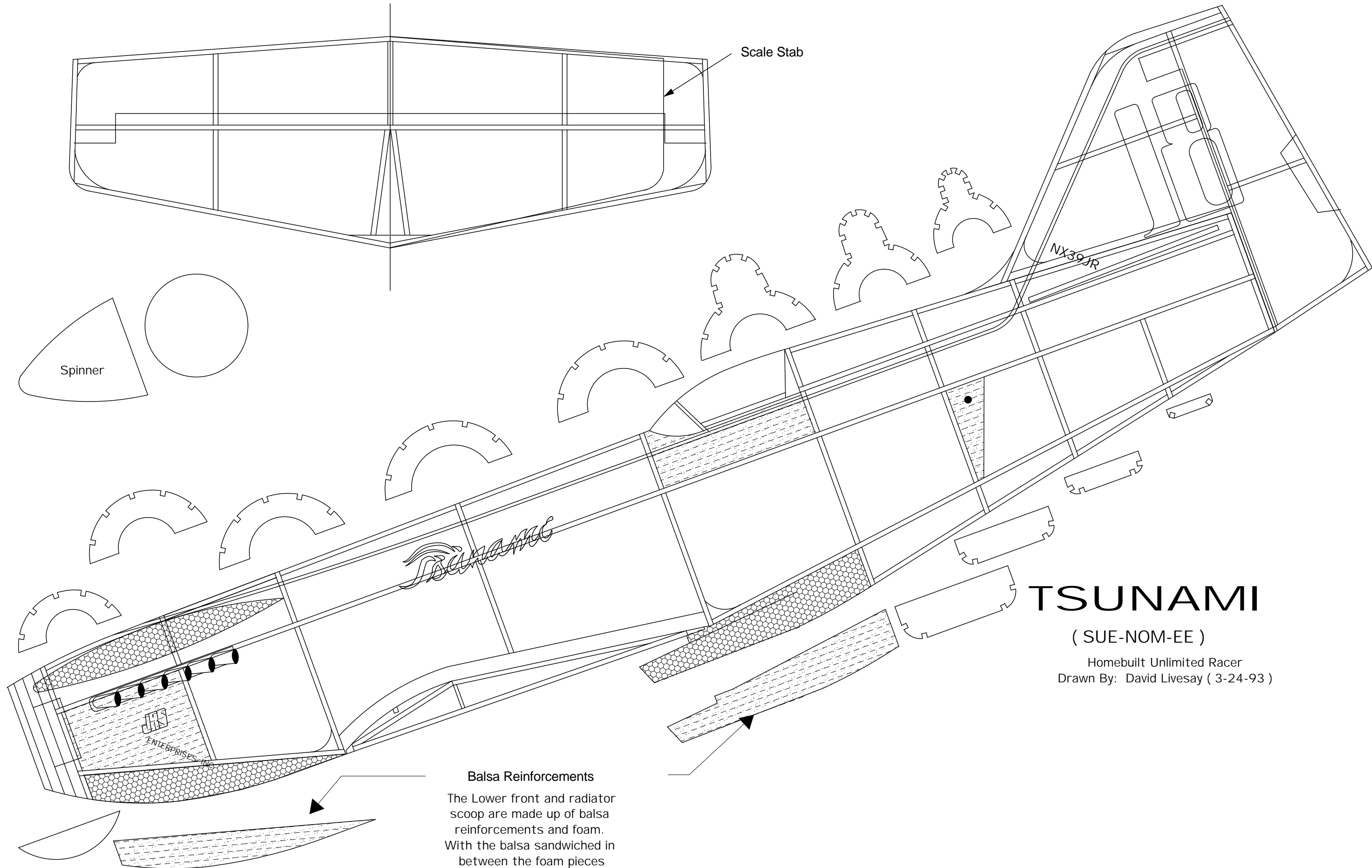
Wing is Cracked Rib Construction with a Full Depth Main Spar.



Scale Stab



Spinner



Balsa Reinforcements

The Lower front and radiator scoop are made up of balsa reinforcements and foam. With the balsa sandwiched in between the foam pieces

TSUNAMI

(SUE-NOM-EE)

Homebuilt Unlimited Racer
 Drawn By: David Livesay (3-24-93)