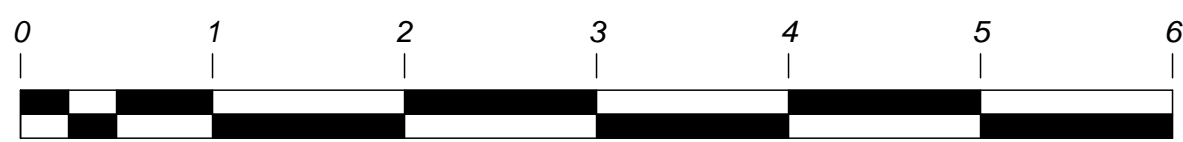
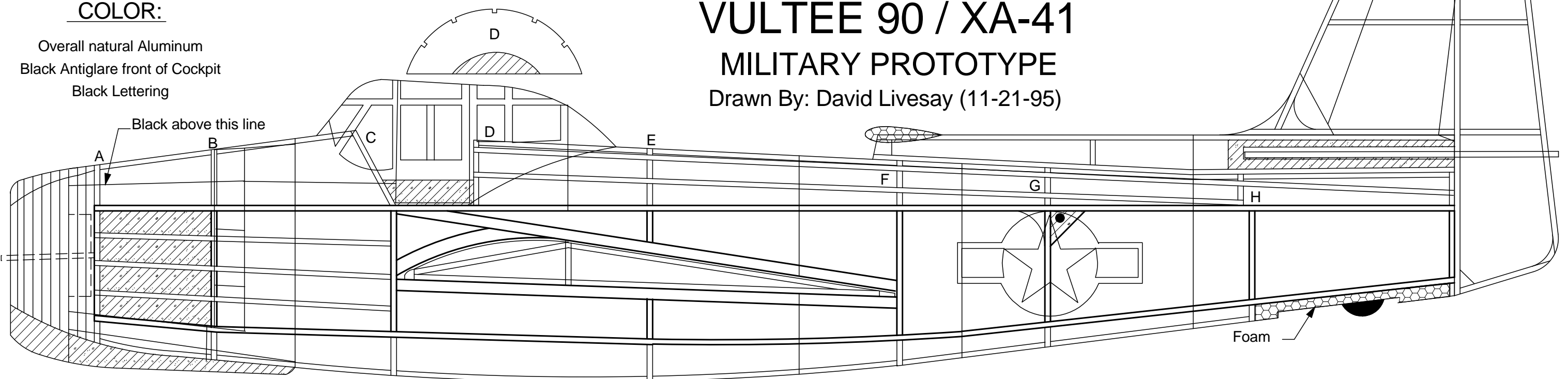


COLOR:

Overall natural Aluminum
 Black Antiglare front of Cockpit
 Black Lettering

**VULTEE 90 / XA-41
 MILITARY PROTOTYPE**

Drawn By: David Livesay (11-21-95)

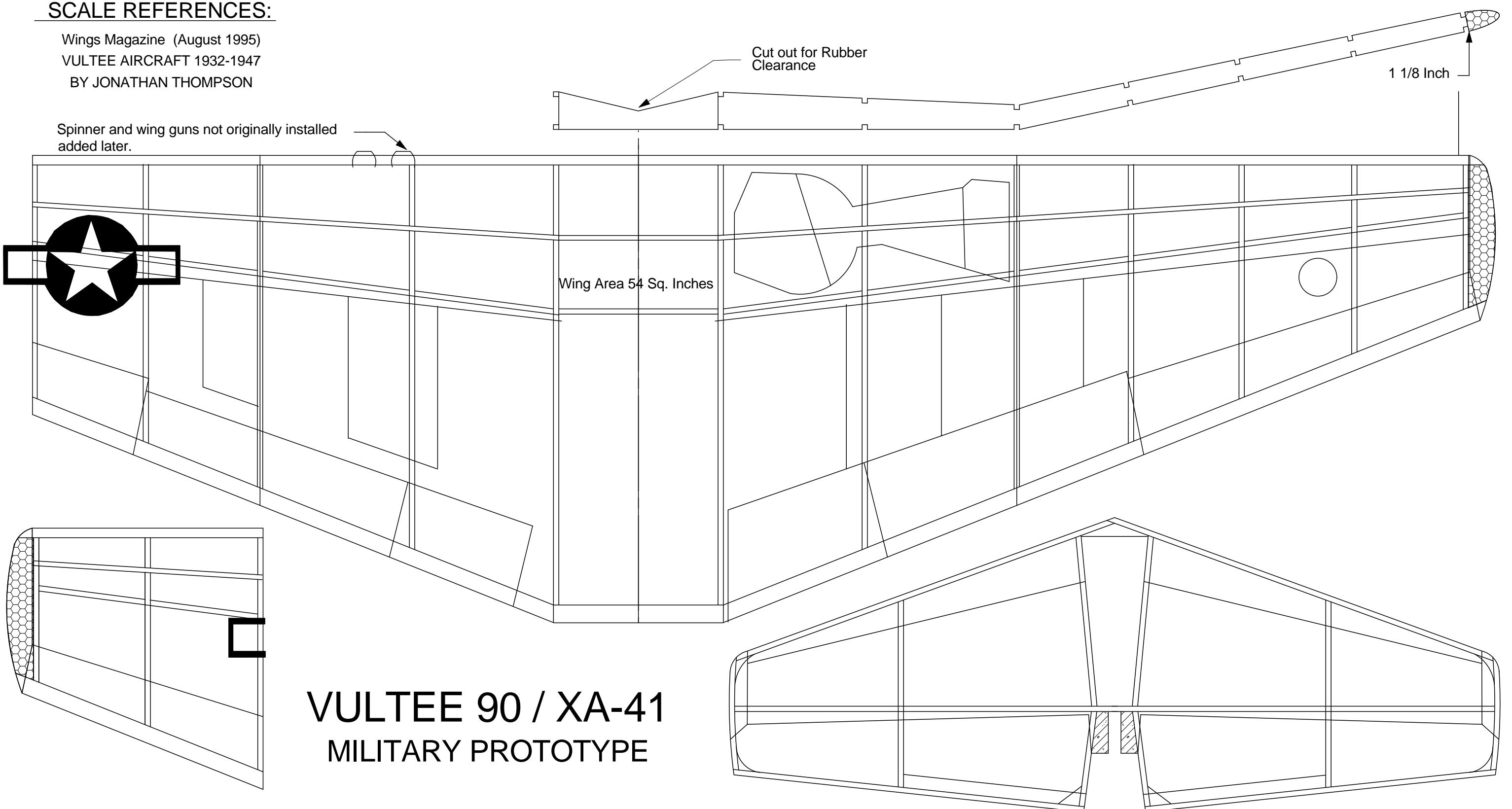


I used a 7 Inch Peck prop with a single 32 inch loop of about 5/32 Tan II rubber. The model also needed 1 1/2 grams of clay in the nose to get the CG right. Use strong stringy wood in the wing. I usually use at least 9 lb balsa for the majority of the wing construction and nothing under 7 to 7 1/2 lbs in the rest of the construction. Even using the heavier wood you should be able to build the model at about 20 to 25 grams.

SCALE REFERENCES:

Wings Magazine (August 1995)
 VULTEE AIRCRAFT 1932-1947
 BY JONATHAN THOMPSON

Spinner and wing guns not originally installed
 added later.



**VULTEE 90 / XA-41
 MILITARY PROTOTYPE**